



METROPOLITAN



PRIMARIA COMARNIC PRIMARIA CAMPINA



GHM TEAM
TRUE ATTITUDE
@ecorporate



4 DAYS ORIENTEERING in ROMANIA

- COMARNIC & CAMPINA -

2023, April 28th - May 1st

BULLETIN 2

3 WRE stages

& Special Trainings before JWOC 2023

Carpathian Orienteering Trophy – *Open competition*

Overall 3 individual WRE stages: Urban Sprint, LD, MD; Classes: M,W 12, 14,16, 18, 20, 21E, 35, 45, 50, 55, 60, 65, 70, 75, 80, 85, Open Th., Open, Op.Family;

Selection criteria for the Romanian National Team for EYOC and JWOC 2023

Coupe des Pays Latins – *competition for the national teams of Latin Countries; Overall 3 individual WRE stages: Urban Sprint, LD, MD;*

Classes: M,W18, 20, 21E; The first country in the overall national classification will receive the transmissible trophy of the competition.

OK Silva Cup – *open competition - Urban Sprint;*

Classes M,W12,14,16,18,21,35,45,55,65,75,85, Open Th., Open, Op.Family;

For romanian runners, the competition count as a stage in the National Urban Sprint Championship;

Campina Municipality Cup – *competition for the students from Campina; Urban Sprint,* Classes M,W19

Comarnic Town Cup – *competition for the students from Comarnic;* **Overall 2 individual stages: LD, MD;** Classes M,W15, M,W19;

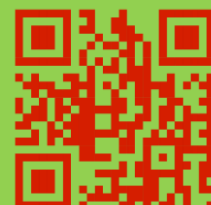
Special Trainings - *Open participation as Prolog or Model Event.* **Parallel Running & Corridor, Special Trainings before JWOC 2023**

INFORMATION:

<https://carpatho.ro>

www.orienteering.ro

<https://eventor.orienteering.org/Events>





**Jose Angel Nieto
Poblete - President
Latin Countries Cup**

*Friends of the Latin Cup, Friends of Orienteering,
As President of the Latin Countries Cup, I would like, first of all, to thank the
Romanian Orienteering Federation and the two organizing Clubs, for giving
me the opportunity to address you, and with that I congratulate Romania for
its commitment to organize the XXVIII Edition of the Latin Cup and the great
challenge that this high-level competition represents, with "WRE" quality, in
each of these 3 days. Orienteering lovers cannot miss this competition, which
is also open to everyone and, with them, let us enjoy everything that this
great Latin country will offers to us.*

Welcome to Romania! We are waiting for you!



**Ionut Patras -
President Romanian
O - Federation**

*On behalf of the Romanian Orienteering Federation, I'm very pleased
to welcome orienteers to experience the greatest Orienteering event of
Spring 2023 in the Region, Latinum Certamen – the XXVIII th Edition, hotsed
by Carpathian Orienteering Trophy and OK Silva Cup, 3 WRE competitions.
Romanian Orienteering Federation, together with Silva and Metropolitan
Orienteering Sport Clubs, with the support of Comarnic and Campina
Municipalities, will prepare this event with challenging orienteering courses
and the best oportunities for athletes to compete and train for JWOC 2023, to
discover the Romanian hospitality and rich culture.*

See you in Prahova County, Romania, in 2023!



**Sorin Nicolae Popa -
Mayor Comarnic City**

*We are delighted to host again this year, in Comarnic, this special
orienteering event that honors us every spring and that has managed to
place our city on the map of the most important sports competitions, in this
field, over the past year. The hills of Comarnic being attractive for lovers of this
sport can only bring us full satisfaction and we wish that, every year, more and
more people learn about the beauties of our city and come to visit us, at this
national and international Orienteering competition is the perfect opportunity
to do so. In 2023, when Romania hosts the Latin Countries Cup, we are all
the more grateful that our federation chose the Comarnic area to represent
our country in the competition. We look forward to seeing you in Comarnic!*



**Alin Ioan
Moldoveanu -
Mayor Campina
Municipality**

*I would like to welcome you, on behalf of Campina City, to the first
Urban Sprint stage of Latin Countries Cup, XXVIII Edition, taking place
in the same time with Campina City Cup and OK Silva Cup.
Campina City supports and promotes physical activity, by building sport
facilities and organising competitions for all kind of sports.*

*I woud like to thank the athletes, teams and supporters of
Orienteering for choosing our City for this competition.*

I wish you success in the competitions and in discovering our City's history!

PROGRAMME, TECHNICAL DATA, LOCATIONS and details for access to EVENT CENTER, PARKING and START/FINISH Areas

Special Training 1, Friday, April 28th, **Voila** (North of Campina)

Parking, Event Centre, Start and Finish:

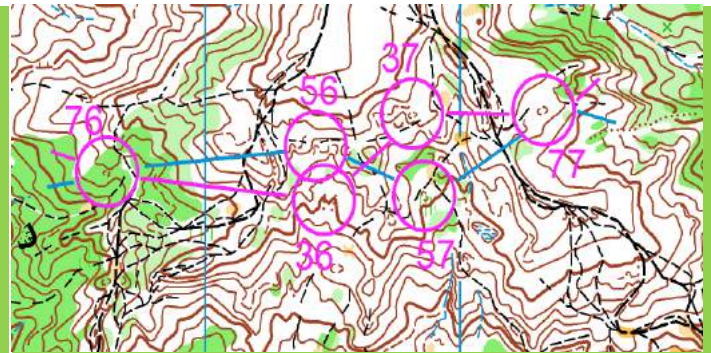
Park „Fontain with cherries” (45.14890; 25.73830)

Registration at Event Centre between 13:00 – 15:00

Free Start between 14:00 - 15:30

Parallel Running - 3,3 Km / 18 Controls (7 common controls)
with a short cut at - 2,2 Km / 12 controls (5 common controls)

Two runners start at the same time. They have one or two different controls between two common controls. The objective is to arrive first at the common controls. A score will be kept. The two runners wait for each other in the common controls and the last arrived kickstarts towards the next common control.



Appropriate for - higher speed training, in the case of two runners at the same level;
- teaching one another, in the case of two runners of different levels

Full Map

Maps with all controls will be available for **MODEL EVENT** races.
Each runner will make your proper race choosing from 28 Controls.

❖ **Special Training 2**, Saturday, April 29th, **Voila**

Parking, Start and Finish: Park „Fontain with cherries”(45.14890; 25.73830)

Free Start between 14:00 - 15:30

Corridor - 4,1 Km with a short cut at - 2,9 Km

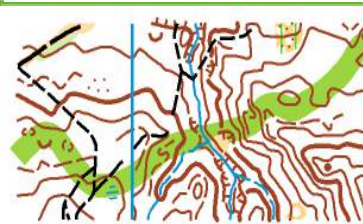
Appropriate for higher concentration training

The map contains only a corridor.
Following the corridor, the runner will find the unmarked controls. Be careful to stay inside the corridor.



Obligatory Route

The runners must follow the route drawn on an integral map to find the unmarked controls.



As a novelty to the previous editions, the map with the Obligatory Route will have the same race as the Corridor.
If you get out of the corridor you can re-enter with the help of the Obligatory Route map.
The chances of success in training are significantly increased.

❖ **Urban Sprint Stage**, Saturday, April 29th, **Campina**

Parking: along the **Carol I Bulevard**, from 45.120240; 25.738866 point

Event Centre and **Quarantine: Technical Forest Lycee** (45.12230; 25.73614)

Start and **Finish:** marked route from quarantine area

Closing the quarantine area: 10:45;

Registration at Event Centre between 9:00 – 11:00; First Start: 11:00;

Price giving ceremony: 30 min after the knowledge of the first placed runners at all classes.

❖ **LD Stage**, Sunday, April 30th, **Comarnic**

Parking P - Ghiosesti Water Basin (45.249650; 25.607440); 4.8 km from DN1

(13 min by car) on an asphalted or concreted road, often with serpentines. The road will be marked in the field, starting from the intersection in DN1 (45.23486;25.63660).

Event Centre – about 300 m from the **Parking P** (visible from P area).

Start 1 – about 950 m / 80m from **Event Centre** by a marked route, showed on the WarmUp Map

Start 2 – about 250 m / 5m from **Event Centre** by a marked route, showed on the WarmUp Map

Finish (visible from EC area) – about 200 m / 30m from **Finish** to **Event Centre**.

WarmUp Map will be available

First Start: 10:00

1:7.500 / 5m

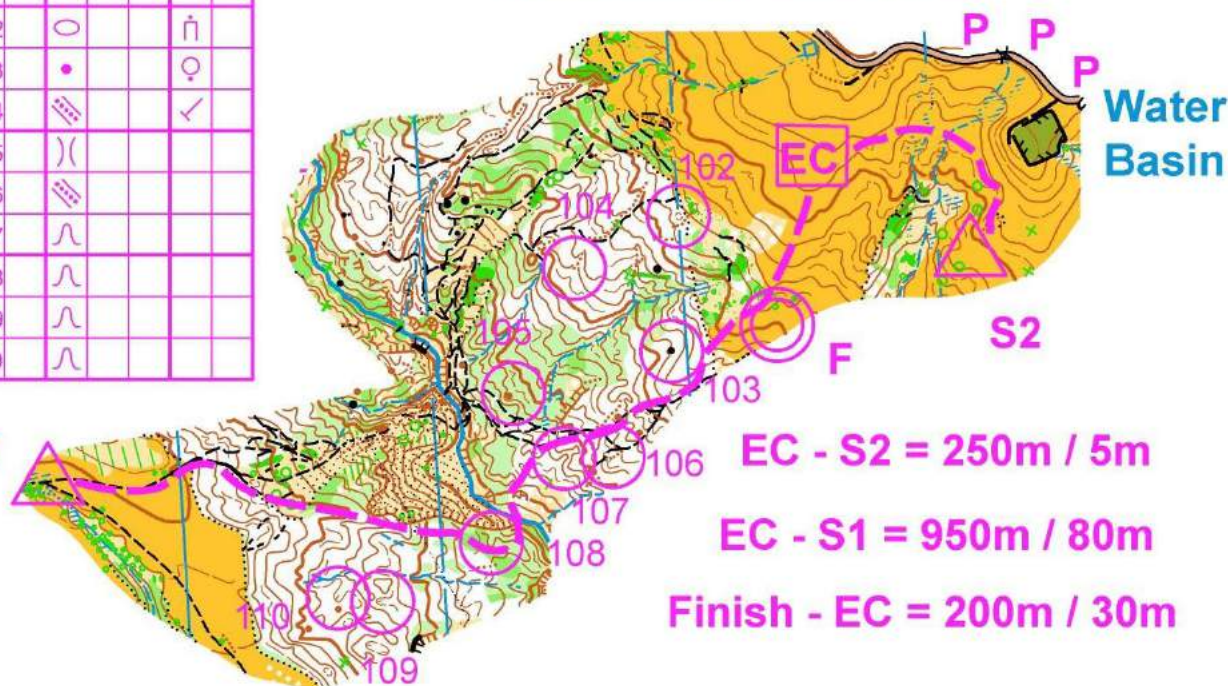
WarmUp Map

LD stage, 2023, April 30 th

COMARNIC, Ghiosesti

▷	S1			
▷	S2			
	102	○		♂
	103	•		♀
	104	▨		✓
	105)		(
	106	▨		
	107	∩		
	108	∩		
	109	∩		
	110	∩		

S1



EC - S2 = 250m / 5m

EC - S1 = 950m / 80m

Finish - EC = 200m / 30m

After running we will be at the Event Centre for:

🇷🇺 **Price giving ceremony: 13:00 and**

🇷🇺 **a great Picnic 12:30 - 15:30**



Enjoy
our
PICNIC

On Sunday, the 30th of April, we will gather on Ghiosesti Hill, in the Event Centre area, at a **great picnic**, where our hosts will provide us with **dining conditions** and some **big surprises**. The talented students from Comarnic City will delight us with **beautiful songs and dances**.



❖ **MD Stage, Monday, May 1st, Comarnic**

Parking P 1 - Gurguiata „At the Cross” (45.252000; 25.587140), along the forestry road, 3,5 – 4 km from **Parking P** (15 min by car) by a forestry road. The road will be marked in the field, starting from the **Parking P**.

Event Centre – (the same as for the LD stage) about 300 m from the **Parking P**.

Start 1 – about 900 m / 100m from **Parking P1** by a marked route.

Start 2 – visible from the end point of **Parking P1**.

Finish (visible from **P1** area) – about 80 m / 10m from **Finish** to **Parking P1**.

First Start: 10:00

After running we will go back to the Event Centre for:

Price giving ceremony: 13:00

Our special trainings and special races for selection the national team for EYOC and JWOC 2023 are connected with

- **the Official JWOC Training Camp (Baia Mare, May, 2 - 4) and with**
- **Electrosistem Cup (terrain like JWOC 2023, Baia Mare, May, 5-7).**

TECHNICAL DATA for **Urban Sprint, LD and MD** stages

CLASS		Urban Sp. Stage Saturday, April 29	LD Stage Sunday, April 30		MD Stage Monday, May 1 st	
❖ Carpathian O-Trophy	❖ Urban Sprint National Championship	Lenght <i>(preliminary data)</i>	Lenght / nr. CP	Start	Lenght / nr. CP	Start
❖ Coupe des Pays Latins						
❖ OK Silva Cup						
W 12	W 14	1,6 Km	2,2 Km / 11 CP	S2	2,1 Km / 11 CP	S2
W 14		1,6 Km	2,6 Km / 11 CP	S2	2,2 Km / 12 CP	S1
W16	W 18	2,5 Km	4,4 Km / 14 CP	S1	3,2 Km / 14 CP	S1
W 18		2,5 Km	5,0 Km / 17 CP	S1	3,5 Km / 15 CP	S1
W 20	W 21	2,5 Km	5,0 Km / 17 CP	S1	3,5 Km / 15 CP	S1
W 21		2,5 Km	8,1 Km / 22 CP	S1	4,4 Km / 19 CP	S1
W 35	W 35	2,5 Km	6,1 Km / 21 CP	S1	3,9 Km / 17 CP	S1
W 40	W 45	2,1 Km	5,0 Km / 17 CP	S1	3,5 Km / 15 CP	S1
W 45		2,1 Km	5,0 Km / 17 CP	S1	3,5 Km / 15 CP	S1
W 50	W 55	1,6 Km	4,4 Km / 14 CP	S1	3,2 Km / 14 CP	S1
W 55		1,6 Km	4,4 Km / 14 CP	S1	3,2 Km / 14 CP	S1
W 60	W 65	1,6 Km	2,9 Km / 12 CP	S2	2,6 Km / 13 CP	S1
W 65		1,6 Km	2,6 Km / 11 CP	S2	2,0 Km / 14 CP	S2
W 70	W 75	1,6 Km	1,9 Km / 11 CP	S2	1,9 Km / 12 CP	S2
W 75		1,6 Km	1,9 Km / 11 CP	S2	1,9 Km / 12 CP	S2
M 12	M 14	2,1 Km	2,5 Km / 12 CP	S2	2,3 Km / 12 CP	S2
M 14		2,1 Km	2,9 Km / 12 CP	S2	2,4 Km / 14 CP	S1
M 16	M 18	3,0 Km	6,1 Km / 21 CP	S1	3,9 Km / 17 CP	S1
M 18		3,0 Km	8,1 Km / 22 CP	S1	4,4 Km / 19 CP	S1
M 20	M 21	3,0 Km	8,1 Km / 22 CP	S1	4,4 Km / 19 CP	S1
M 21		3,0 Km	10,1 Km / 23 CP	S1	5,2 Km / 21 CP	S1
M 35	M 35	3,0 Km	8,1 Km / 22 CP	S1	4,4 Km / 19 CP	S1
M 40	M 45	2,1 Km	6,1 Km / 21 CP	S1	3,9 Km / 17 CP	S1
M 45		2,1 Km	6,1 Km / 21 CP	S1	3,9 Km / 17 CP	S1
M 50	M 55	2,1 Km	5,0 Km / 17 CP	S1	3,5 Km / 15 CP	S1
M 55		2,1 Km	5,0 Km / 17 CP	S1	3,5 Km / 15 CP	S1
M 60	M 65	2,1 Km	4,4 Km / 14 CP	S1	3,2 Km / 14 CP	S1
M 65		2,1 Km	4,4 Km / 14 CP	S1	3,2 Km / 14 CP	S1
M 70	M 75	1,6 Km	2,9 Km / 12 CP	S2	2,6 Km / 13 CP	S1
M 75		1,6 Km	2,6 Km / 11 CP	S2	2,0 Km / 14 CP	S2
M 80	M 85	1,6 Km	1,9 Km / 11 CP	S2	1,9 Km / 12 CP	S2
M 85		1,6 Km	1,9 Km / 11 CP	S2	1,9 Km / 12 CP	S2
Op.Th.	Op.Th.	2,5 Km	4,4 Km / 14 CP	S1	3,2 Km / 14 CP	S1
Open	Open	1,6 Km	2,5 Km / 12 CP	S2	2,3 Km / 12 CP	S2
Op.Fam.	Op.Fam.	1,6 Km	2,2 Km / 11 CP	S2	2,1 Km / 11 CP	S2
Campina Municipality Cup						
W<19 years		1,2 Km	---	---	---	---
M<19 years		1,2 Km	---	---	---	---
Comarnic Town Cup						
W<15 years		---	2,2 Km / 11 CP	S2	2,1 Km / 11 CP	S2
M<15 years		---	2,2 Km / 11 CP	S2	2,1 Km / 11 CP	S2
W<19 years		---	2,5 Km / 12 CP	S2	2,3 Km / 12 CP	S2
M<19 years		---	2,5 Km / 12 CP	S2	2,3 Km / 12 CP	S2

Entry deadlines: *Expected deadline – 2023, March 31th*

Last registration - 2023, April 18th

Entry Fee: *for Carpathian O – Trophy and OK Silva Cup*

No Entry Fee *for Coupe de Pays Latins,*

for Campina Municipality Cup and for Comarnic Town Cup



Classes	Trainings in Prahova	Competition Stages
MW 12,14	3 Euro / map	3 Euro / stage
MW 16,18 & MF 65 - 85		5 Euro / stage
MW 20 - 60		7 Euro / stage

For MW 12,14,16 classes, the entry fee will be supported by OK Silva Campina

When you make your entries, **please specify** what maps you require for the trainings at Voila, referred to:

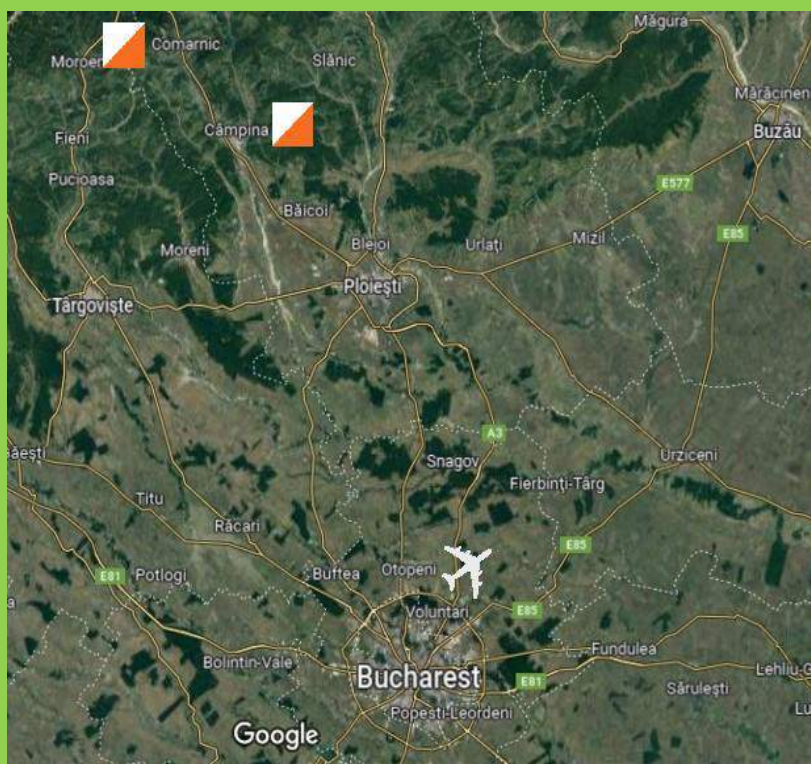
- ✓ for Friday: i) Model Event, all controls map, ii) Parallel running (2 maps for 2 runners);
- ✓ for Saturday: i) Corridor map, ii) Obligatory Route map (one of them or both).

WELCOME TO ROMANIA

To reach COMARNIC,
you have 90 km by DN1 from
International Airport
of OTOPENI

ACCOMMODATION:
Guesthouses and hotels in
Comarnic, Campina,
Breaza or Sinaia.

In Campina,
our recomandation
is for SEVA Hotel
(45.11653:25.73916)



PARTICIPATION IN THE COMPETITION

IS AT YOUR OWN RISK

Participation in the competition
is in compliance with the regulations imposed
in the context of the COVID-19 pandemic

TOURISTIC OBJECTIVES

You can pay a visit to **Peles Castle** (1873- 1914), the **Summer Royal Family Residence**, at **Sinaia**, about **20 km North** from **Comarnic**.



Peles Castle, Baroque room



Posada Castle, built between 1842 and 1848 by Gheorghe Bibescu, the reign of Wallachia, now host of Cynegetic Museum

„Lespezi” Hermitage (1601), with „Sfânta Treime” Church (1661-1675), historic monument. Detail from Parvu Mutu’s painting (1694).

The „Romantic” manor house (1878), architectural monument. Together with another 20 houses (1878-1930), remark themselves through frontages with beautiful wooden laces.

The **Nicolae Grigorescu Memorial Museum** is a museum-house located at 166 Carol I Boulevard, **Câmpina**, where lived and painted Nicolae Grigorescu (1838 - 1907), one of the founders of the modern Romanian picture. In the museum can be seen around 102 pictures and drawing, beside of many personal things of the artist.



Iulia Hasdeu (1869 - 1888) was a young gifted woman, a Romanian intellectual, writer and poet. She also manifested herself in music and painting. She died at 18 years old of tuberculosis. The „Iulia Hasdeu” Castle was built between 1894 and 1896 to commemorate Iulia Hasdeu.

